



Examination lamp – 130F

300/L-002 – 130F lamp & suspension arm

300/CL-002 – 130F lamp, suspension arm & 80 cm long ceiling column

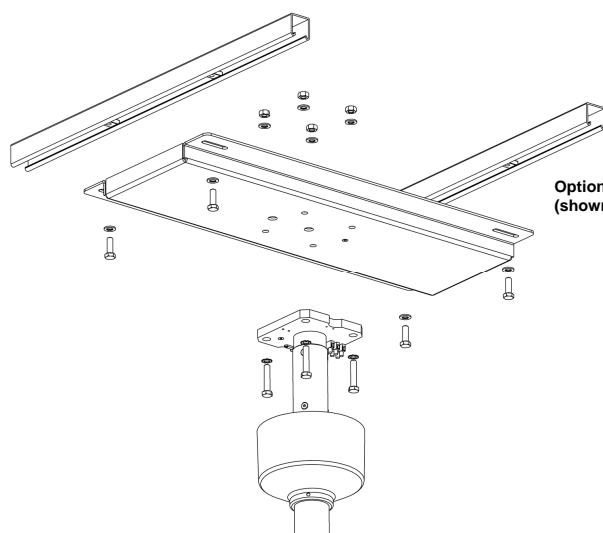
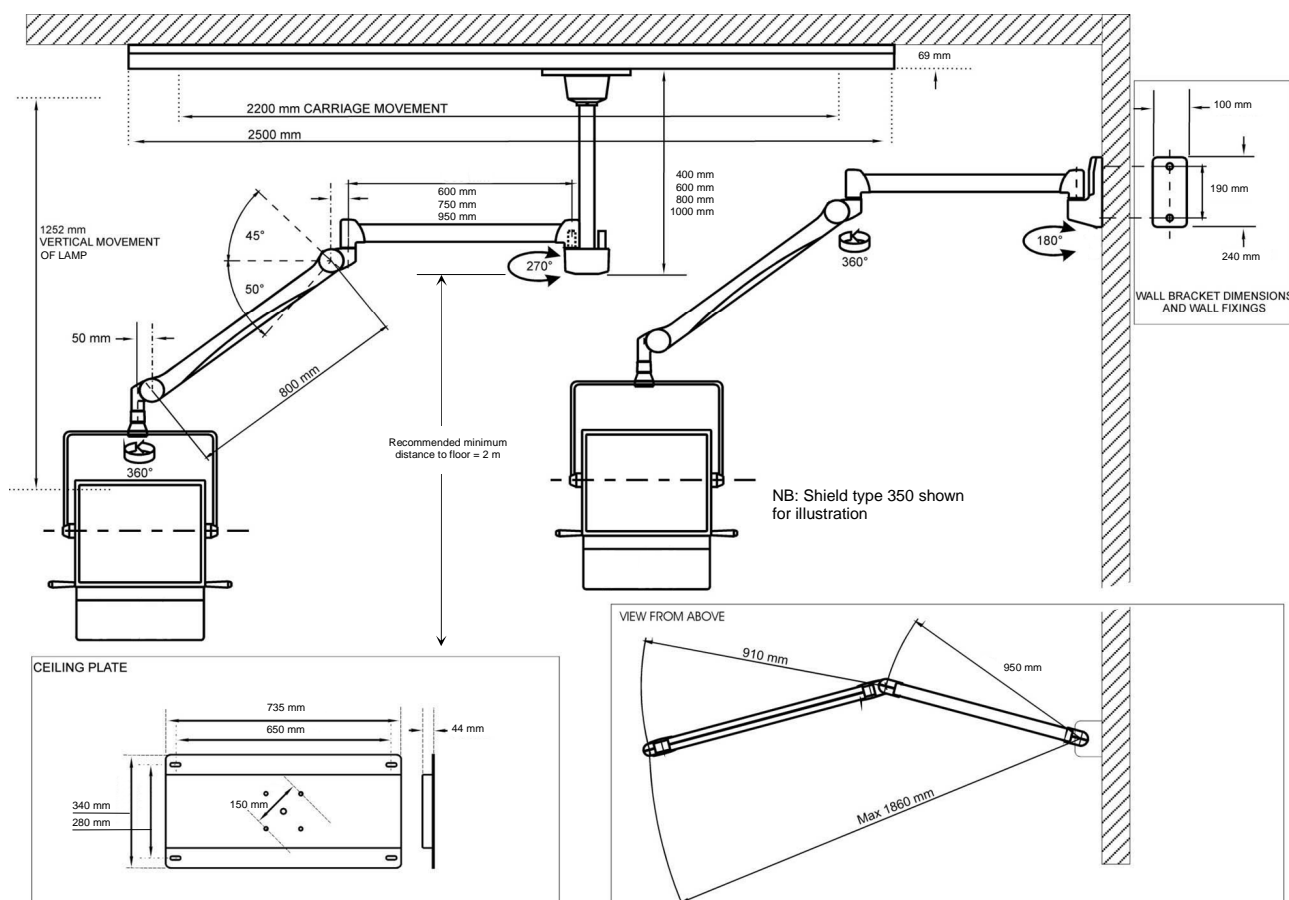
The 130F lamp produces 50,000 Lux light intensity and provides a colour rendering indexes of R_a96 . This type of light output enables the user to easily determine variations in tissue colour. The use of cold light filters and cold light reflectors help reduce heat output around the head area of the operator.



Technical specification	130F
Light intensity (Lux)	50,000
Colour rendering index R_a	96
Working distance (cm)	70 - 140
Focusable light field size (cm)	14 - 25
Colour temperature (Kelvin)	4300
Transformer location	Lamp-head
Halogen bulb	22,8V / 50 W
Mains connection	220/240 V 50-60Hz
Diameter of lamp head (cm)	22
Sterilizable handle included	yes



Technical information



Optional installation aid: Ceiling plate #300/P/004 (shown with ceiling rails and ceiling column)

Weights

Examination lamp 130F	3.5 kg
Dual mount ceiling column (80 cm)	11 kg
Suspension arm	9 kg
Wall bracket	2 kg
Ceiling track	40 kg
Installation aid - Anchorage plate (#300/P/004)	15 kg

doc: 300_I & cI_002 iss1



Kenex (Electro-Medical) Ltd
24 Burnt Mill, Harlow, Essex, CM20 2HS, England
tel: +44 (0) 1279 417241 fax: +44 (0) 1279 443749

email: kenex@kenex.co.uk web: www.kenex.co.uk